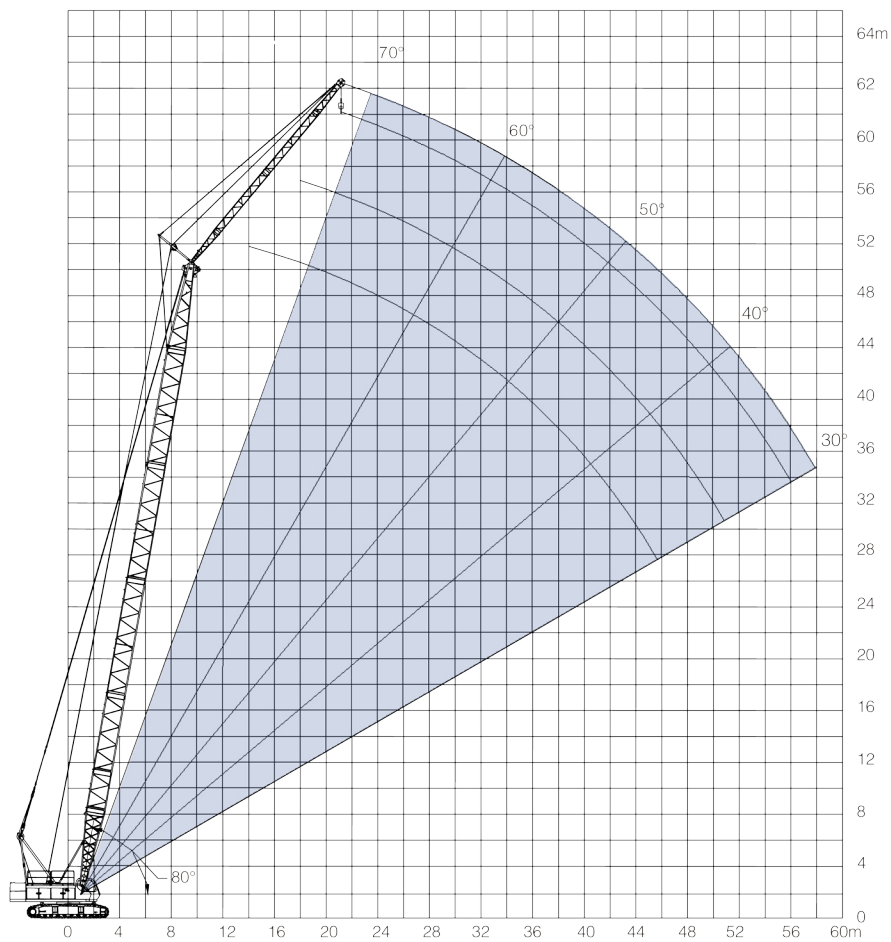


Lifting height on SF boom (2)



F-jib angle=30°

Lifting capacity on SF boom(3)

Length of S (m)	37						40					
	6		12		18		6		12		18	
Length of F (m)	F-jib angle (°)		F-jib angle (°)		F-jib angle (°)		F-jib angle (°)		F-jib angle (°)		F-jib angle (°)	
Radius (m)	10°	30°	10°	30°	10°	30°	10°	30°	10°	30°	10°	30°
10	7	6					7					
12	7	6	7				7	6	7			
14	7	6	7		5.5		7	6	7		5.5	
16	7	6	7	6	5.5		7	6	7	6	5.5	
18	7	6	7	6	5.5		7	6	7	6	5.5	
20	7	6	7	6	5.5	4	7	6	7	6	5.5	4
22	7	6	7	6	5.5	4	7	6	7	6	5.5	4
24	7	6	7	6	5.5	4	7	6	7	6	5.5	4
26	6.7	6	6.7	6	5.5	4	6.4	6	6.1	5.4	5.5	4
28	6.1	5.5	6.1	5.5	5.5	3.5	5.5	5.4	5.5	4.8	5	3.7
30	5.4	4.8	5.4	4.8	5	3.5	5.2	4.8	5	4.2	5	3.7
32	4.9	4.4	4.9	4.4	4	3.3	4.4	4.4	4.3	4	4.7	3.5
34	4.3	4	4.3	4	4	3.2	4	4	3.9	3.8	3.9	3.5
36			3.9	3.7	3.7	3.2	3.6	3.6	3.6	3.5	3.5	3.3
38			3.5	3.4	3.5	3.1		3.1	3.2	3	3.2	3.1
40				3.2	3.2	3			2.7	2.6	2.6	2.5
42										2.4	2.5	2.3
44												
46												
48												
50												
52												

Lifting capacity on SF boom (4)

Length of S (m)	43						46					
	6		12		18		6		12		18	
	10°	30°	10°	30°	10°	30°	10°	30°	10°	30°	10°	30°
12	7						7					
14	7	6	7				7	6	7			
16	7	6	7	6	5.5		7	6	7		5.5	
18	7	6	7	6	5.5		7	6	7	6	5.5	
20	7	6	7	6	5.5	4	7	6	7	6	5.5	
22	7	6	7	6	5.5	4	7	6	7	6	5.5	4
24	7	6	7	6	5.5	4	6.5	6	7	6	5.5	4
26	6.3	5.5	6.3	6	5.5	4	6	5.9	5.9	5.7	5.5	4
28	5.5	4.7	5.5	5.4	5.4	4	5	4.9	5	4.9	5	4
30	4.8	4.3	4.8	4.7	5	4	4.7	4.6	4.6	4.5	4.5	4
32	4.2	4.1	4.2	4.1	4.2	4	4	3.9	3.9	4	3.9	3.8
34	4	4	4	4	4	3.5	4	3.7	3.9	3.7	3.7	3.5
36	3.6	3.6	3.7	3.6	3.6	3.5	3.5	3.5	3.5	3.4	3.4	3.3
38	3.3	3.3	3.3	3.3	3.4	3.2	3.2	3.2	3.2	3.2	3.2	3.2
40			3.1	3	3.1	3	2.9	2.9	2.9	2.9	3	3
42			2.7	2.7	2.6	2.7		2.6	2.5	2.5	2.5	2.5
44				2.5	2.5	2.5				2.4	2.4	2.4
46												
48												
50												
52												
54												

Lifting capacity on SF boom (5)

Length of S (m)	49					
	6		12		18	
	10°	30°	10°	30°	10°	30°
12	7					
14	7	6	7			
16	7	6	7		5.5	
18	7	6	7	6	5.5	
20	7	6	7	6	5.5	
22	7	6	7	6	5.5	4
24	6.5	6	6.5	6	5.5	4
26	5.7	5.5	5.7	5.5	5.5	4
28	5.1	5	5	5	4.9	4
30	4.5	4.4	4.5	4.4	4.5	4
32	4	4	4	4	4	3.7
34	4	4	3.6	3.6	3.5	3.5
36	3.4	3.3	3.3	3.3	3.2	3.2
38	3	3	3	3	3	3
40	2.8	2.8	2.8	2.8	2.8	2.8
42	2.5	2.5	2.5	2.5	2.5	2.5
44		2.2	2.2	2.3	2.3	2.3
46			1.9	1.9	1.9	1.8
48						
50						
52						
54						
56						
58						